

# SMART FUTURE

## HARBORING INNOVATION WITH DIGITAL TECHNOLOGY

**Taiwan International Ports  
Corporation, Ltd.**  
**2024.8.13**







# I WANT TO SHARE WITH YOU...

- **OVERVIEW OF TIPC AND OUR PORTS**
- **TRENDS AND CHALLENGES OF OUR PORTS**
- **TIPC'S SMART PORT PROGRESS**
- **MUTUALISM OF PORT RELATED PARTIES**



# A GLOBAL SHIPPING HUB LEVERAGING OUR EDGE, EMBRACING OUR DUTY





# TIPC-PORTS OPERATION

✓ Oceanic container shipping port



**Taipei**

✓ Home Port of International Cruise Lines



**Keelung**



**Taichung**

✓ Energy and industrial development base

**Suao**

✓ Tourism and recreation port



**Hualien**

✓ Tourism and recreation port



**Penghu**

**Budai**

**Anping**

**Kaohsiung**

● **7 International Commercial Ports**

● **2 Domestic Commercial Ports**  
(Mandated by MPB)



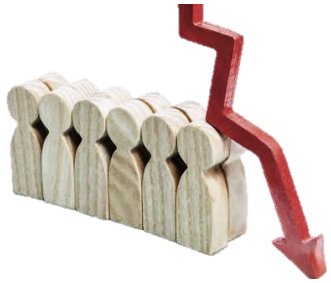
✓ Tourism and recreation port

✓ **Intercontinental Transshipment hub**



# CHALLENGES IN THE NEW ERA OF GLOBAL MARITIME INDUSTRY

## Port Labor Shortage



## New Business Diversification



## Emerging Technologies



## Low Carbon and Decarbonization

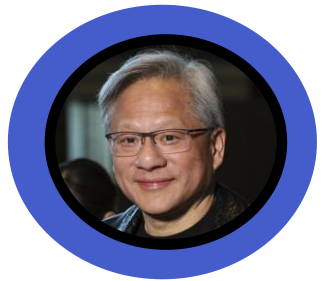


## Sustainability and Resilience





# DIGITAL TRANSFORMATION USHERS IN A NEW ERA FOR MARITIME INDUSTRY



**NVIDIA Founder**  
**Jensen Huang**

**“Innovation is not about inventing something new, it's about improving what already exists.”**



# FROM LABOR INTENSIVE TO AUTOMATION





# INNOVATIVE VITALITY DRIVEN BY SMART TECHNOLOGY

Port of Kaohsiung in the 1950s



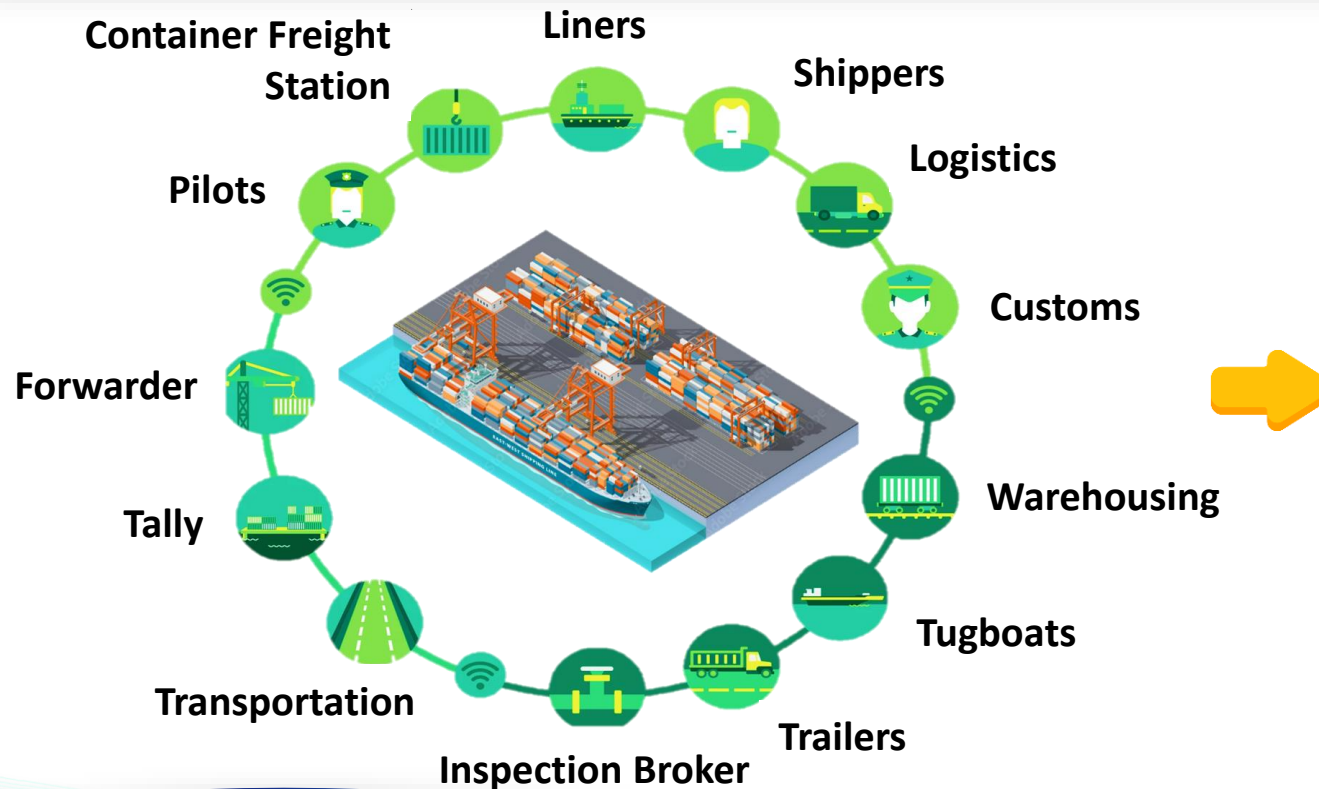
Port of Kaohsiung Today





# TIPC SMART PORT VISION

**“We aim to build a smart port that prioritizes safety, efficiency, quality, and sustainability.”**



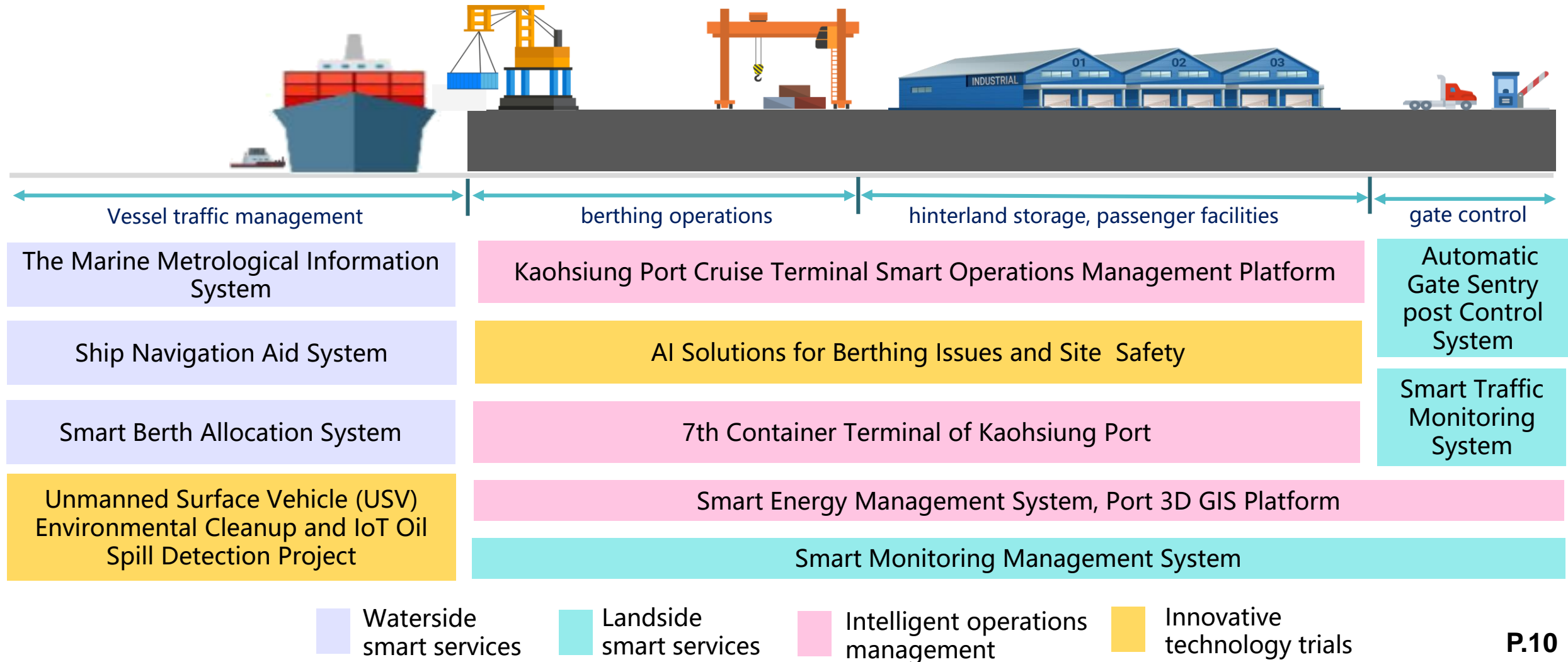
WHO are we serving?

WHAT are we satisfying?

HOW can we satisfy their needs?



# WHAT WE HAVE INTRODUCED IN PROMOTING SMART PORT DEVELOPMENT





# THE MARINE METROLOGICAL INFORMATION SYSTEM



## 24/7 Marine Weather Monitoring, Intelligent Early Warning

- Monitor wind speed, waves, tide levels, ocean currents, visibility, etc. at port area.
- Use push notifications function for early warning to enhance port and vessel navigation safety.
- Provide real-time and accurate information to pilots, ships, agents, and VTS to assist decision-making and operations.





# SHIP NAVIGATION AID SYSTEM



## Consolidate Ship Navigation Dynamics to Enhance Operational Safety

- Integrate ship AIS dynamics and radar data to analyze vessel trajectories.
- Use AI image recognition and algorithm for prediction of ship deviation and timeline of location.
- Provide real-time alarms of potential navigation incidents such as over speeding, collision and anchor dragging.

\*Calculate 2022-2023 system statistics



30 Potential  
Maritime  
Incidents  
Prevented  
since 2022





# SMART BERTH ALLOCATION SYSTEM



## A One-Stop Smart Berth Status Information Dashboard

- Live display of berth availability and arrival /departure time of vessels.
- One-stop service by combining information of channel traffic control and important port activities.
- Online berth application function for ship agents, cutting annual CO2 emissions by approximately 30 tons.





# AUTOMATIC GATE SENTRY POST CONTROL SYSTEM



## Automated Vehicle/Personnel Access Control

- Verify and record vehicle/ individual access in/out port area and Provide quick entry/exit of container trucks.
- Real-time crosscheck with lists of stolen vehicles and fugitives through API connections with database in National Police Agency.
- Over 99% of success rate in AI recognition of vehicle types, helping vehicle diversion.



Vehicle  
clearance  
time reduced  
from 4 min to  
10 sec

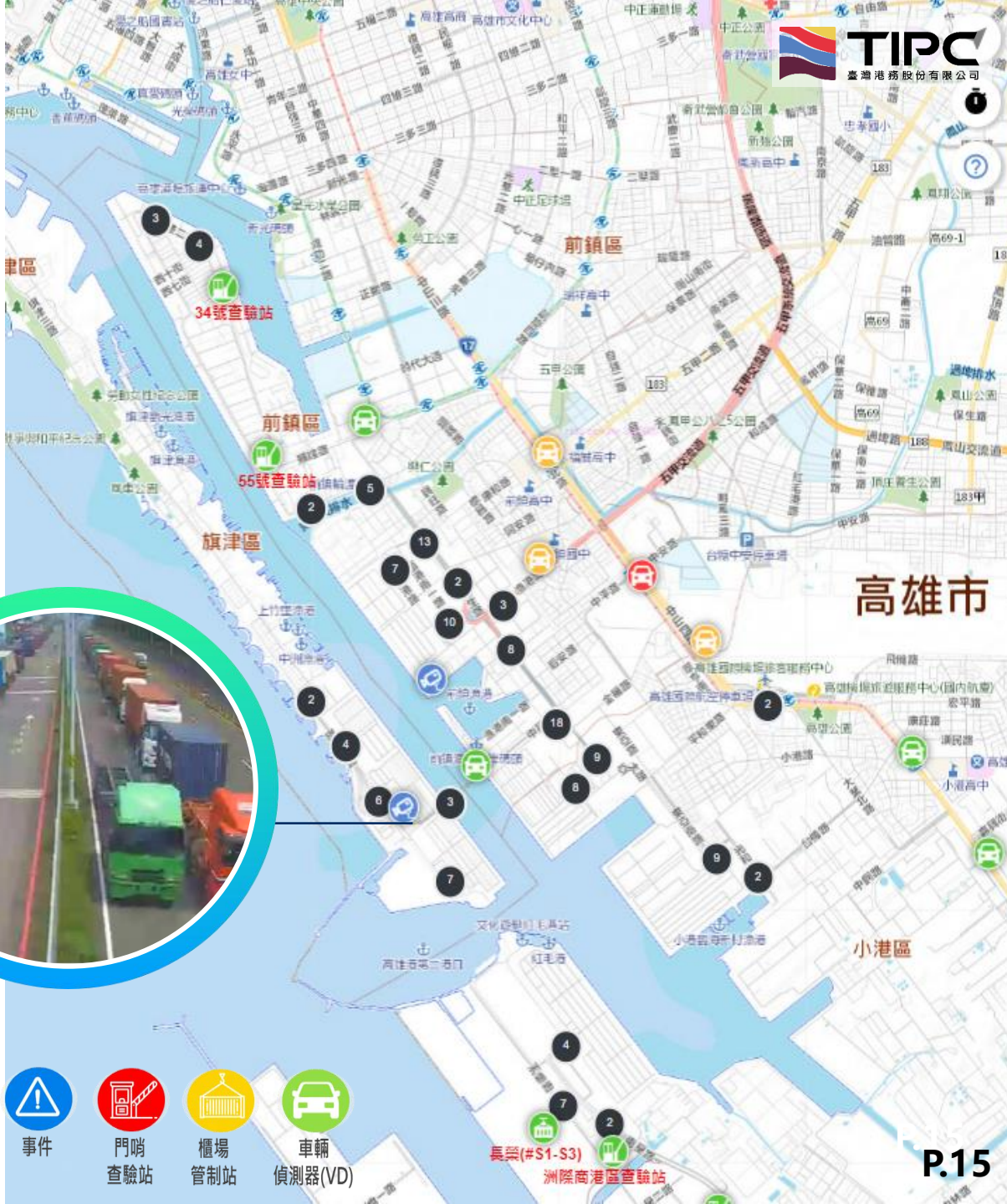


# SMART TRAFFIC MONITORING SYSTEM



## Real-time Road Traffic Query

- Provide real-time road traffic information in port area and queue status of trucks at container terminals in Kaohsiung Port
- Visualize road traffic information for truck drivers better trip planning, preventing road congestion.



QR-CODE  
for the website



CCTV



事件



門哨  
查驗站



櫃場  
管制站



車輛  
偵測器(VD)



## Port Operations Control Center

# SMART MONITORING MANAGEMENT SYSTEM



## Real-time Intelligent Monitoring and Alerting

- 932 CCTV camera (not included leased terminals and warehouses) images and Information at Kaohsiung Port sent to Port Operations Control Center for monitoring and necessary actions.
- AI image recognition cameras installed at high-risk areas to provide proactive warning to Control Center.



Man fell in



Trespass by vehicle

# SMART ENERGY MANAGEMENT SYSTEM



## Real-time Monitor Energy Efficiency

- Smart sensing equipment of water, electricity, lighting, temperature and monitoring platforms installed at all ports managed by TIPC.
- 24/7 monitoring and management of energy usage.
- Solar power storage system (7,000 KW of generation capacity and 2 MW of energy storage) installed at Kaohsiung Port 7th Container Terminal to achieve peak-shaving goal.





# KAOHSIUNG PORT CRUISE TERMINAL SMART OPERATIONS MANAGEMENT PLATFORM



**A Silver-label Intelligent Building  
Awarded by Taiwan's Ministry of  
Interior**

- Customs clearance capacity up to 2,100 passengers per hour for homeport cruises and 3,500 for port-of-call cruises.
- Smart management of foot traffic, lighting, air conditioning, fire safety, and water supply/drainage; anomaly detection and alerts.
- Further integrates energy usage to become a smart sustainable building.



# 7<sup>th</sup> CONTAINER TERMINAL OF KAOHSIUNG PORT



## The Most Advanced Container Terminal in Taiwan

- 2,430 meters of quay and 149 hectares of hinterland capable of accommodating 4 24,000-TEU class containerships at a time.
- Unmanned ship-to-shore crane operation at quay and automated cargo-handling operation at yard.
- Fully paperless for cargo pickup and delivery.
- Introduce independent 5G band and apply digital fence management system within the terminal premise.



Automated Rail-Mounted Gantry Crane

25 row tandem lifting quay cranes



Annual Capacity up to 6.5 Million TEU







# INTRODUCE INNOVATION AND ENHANCE PARTNERSHIPS



+



+



Port related  
industries

TIPC

ICT companies /  
Local governments

# DIGITAL TRANSFORMATION INCENTIVE

## Fields and main topics of proposals

### Cargo and terminal operations



- Operational automation
- Energy management
- Power supervision
- Facilities for clean trucks
- Smart cargo handing/delivery

### ICT applications



- Blockchain
- Cyber security

### Transportation and logistics



- Smart Warehousing
- Storage management
- Platform for carbon emission management

### Passenger and yacht/ferry



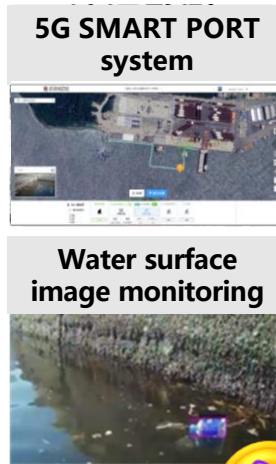
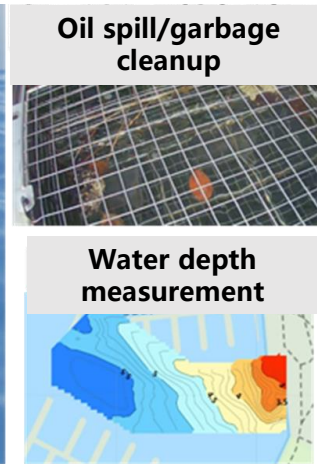
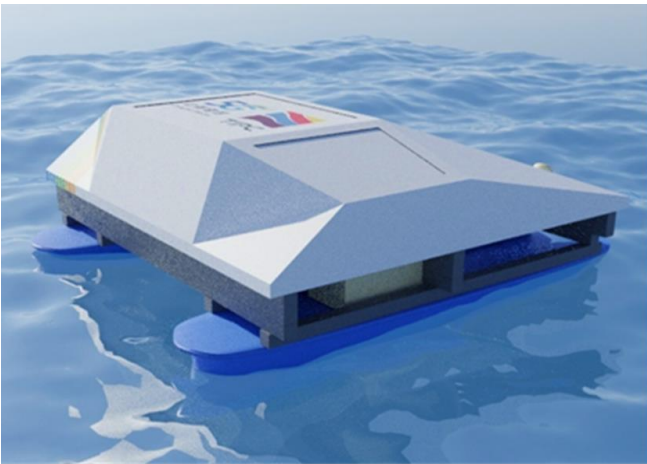
- Berth management
- Ticketing system
- Energy management



# UNMANNED SURFACE VEHICLE (USV) ENVIRONMENTAL CLEANUP AND IOT OIL SPILL DETECTION PROJECT

POS (Proof of Service) project in Kaohsiung and Anping Ports.

- ✦ Apply 5G communication to unmanned surface vehicles (USV) performing garbage and oil spill cleanup tasks by combining with related equipment to assist water environment management operations in the port area.

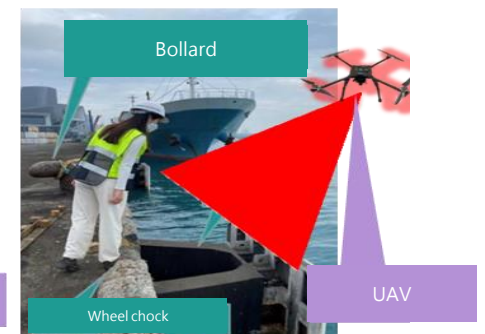
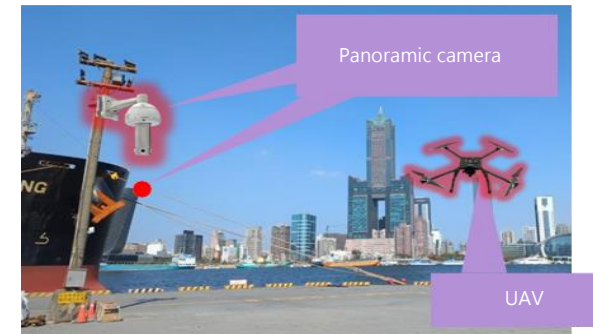
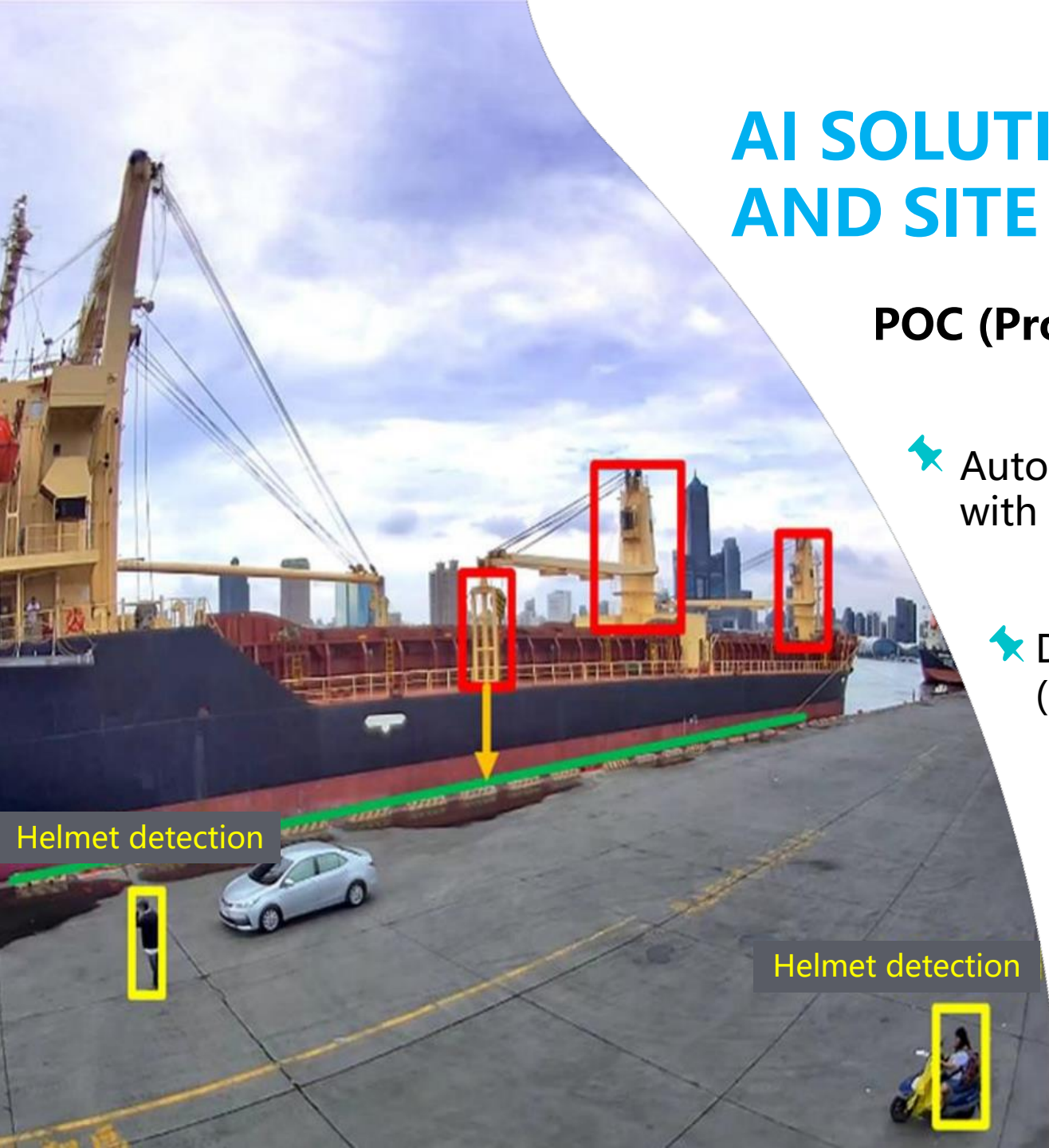




# AI SOLUTIONS FOR BERTHING ISSUES AND SITE SAFETY

**POC (Proof of Concept) project in Kaohsiung Port.**

- ✦ Automatically detect during vessel berthing/unberthing; with AI to detect and record damage of quayside objects.
- ✦ Detect on-site workers wearing protective equipment (e.g. Helmet and reflective vests).





# TIPC TWIN TRANSITION

Act **NOW** for a sustainable future

*Sustainable  
Development*

*Digital  
Transformation*

